

FMBES-CC




Models 625, 875, 1125, and 1375



In accordance with Nexen's established policy of constant product improvement, the specifications contained in this manual are subject to change without notice. Technical data listed in this manual are based on the latest information available at the time of printing and are also subject to change without notice.

Technical Support: 800-843-7445
(651) 484-5900

www.nexengroup.com

	<div data-bbox="623 558 919 611"> DANGER</div> <p>Read this manual carefully before installation and operation. Follow Nexen's instructions and integrate this unit into your system with care. This unit should be installed, operated and maintained by qualified personnel ONLY. Improper installation can damage your system, cause injury or death. Comply with all applicable codes.</p>	
---	---	---

This document is the original, non-translated, version.

Conformity Declaration: In accordance with Appendix II B of CE Machinery Directive (2006/42/EC):

A Declaration of Incorporation of Partly Completed Machinery evaluation for the applicable EU directives was carried out for this product in accordance with the Machinery Directive. The declaration of incorporation is set out in writing in a separate document and can be requested if required.

This machinery is incomplete and must not be put into service until the machinery into which it is to be incorporated has been declared in conformity with the applicable provisions of the Directive.

Nexen Group, Inc.
560 Oak Grove Parkway
Vadnais Heights, Minnesota 55127

ISO 9001 Certified

Copyright 2014 Nexen Group, Inc.








Table of Contents

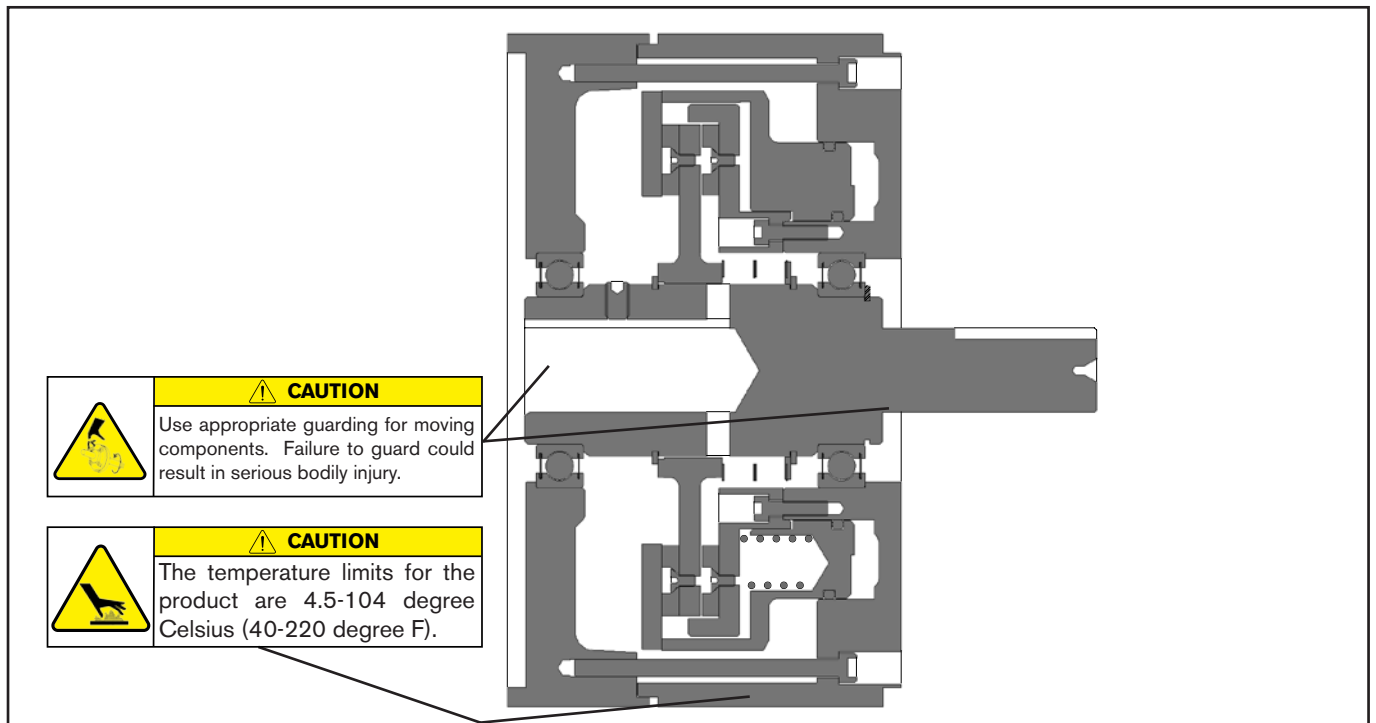
General Specifications	4
General Safety Precautions	4
Installation	5
Manual Release Operation	5
Lubrication	6
Air Connections	6
Troubleshooting	7
Parts Replacement:	
Friction Facing	8
Ball Bearings, Compression Spring, Waved Spring & O-Ring Seals	9
Replacement Parts	11
FMBES-CC, 625 & 857	12
FMBES-CC, 1125 & 1375	13
Warranty	14

GENERAL SPECIFICATIONS

Specifications	
Minimum Static Brake Torque	Up to 101 Nm (900 in-lbs)
Minimum Disengagement Air Pressure	2.1 - 4.1 bar (30 - 60 psi)
Service Temperature	4.5 - 104 C (40 - 220 F)
Approximate Weight	Up to 26 kg (57.3 lbs)

GENERAL SAFETY PRECAUTIONS

	<p>CAUTION</p> <p>Use lifting aids and proper lifting techniques when installing, removing, or placing this product in service.</p>		<p>CAUTION</p> <p>Use appropriate guarding for moving components. Failure to guard could result in serious bodily injury.</p>
	<p>CAUTION</p> <p>Watch for sharp features when interacting with this product. The parts have complex shapes and machined edges.</p>		<p>CAUTION</p> <p>The temperature limits for the product are 4.5-104 degree Celsius (40-220 degree F).</p>
	<p>WARNING</p> <p>Ensure proper guarding of the product is used. Nexen recommends the machine builder design guarding in compliance with OSHA 29 CFR 1910 "Occupational Safety and Health Hazards".</p>		<p>WARNING</p> <p>This product is capable of emitting a spark if misused, therefore it is not recommended for use in any explosive environment.</p>
	<p>CAUTION</p> <p>Working with spring loaded or tension loaded fasteners and devices can cause injury. Wear safety glasses and take the appropriate safety precautions.</p>		



INSTALLATION

NOTE

The following sections are arranged by model. Verify that you are in the correct section for your model.

FMBES-CC

Refer to Figure 1.

1. Remove the six Socket Head Cap Screws (Item 11) and separate the two halves of the FMBES-CC.
2. Using four Socket Head Cap Screws (Item 34) and Lock Washers (Item 35), secure the Female Pilot (Item 6) to the motor. Tighten the Socket Head Cap Screws to the recommended torque (See Table 1).
3. Install the customer supplied key into the motor shaft.
4. Reassemble the two halves of the FMBES-CC.
5. Apply a drop of Loctite® 242 to the threads of the six Socket Head Cap Screws (Item 11).
6. Reinstall the six Socket Head Cap Screws (Item 11); then, alternately and evenly tighten them to 65 In. Lbs. [7.3 Nm] torque.
7. Remove Pipe Plug (Item 30).
8. Tighten the Set Screw (Item 29) to lock the customer supplied key. Reinstall the Pipe Plug (Item 30).

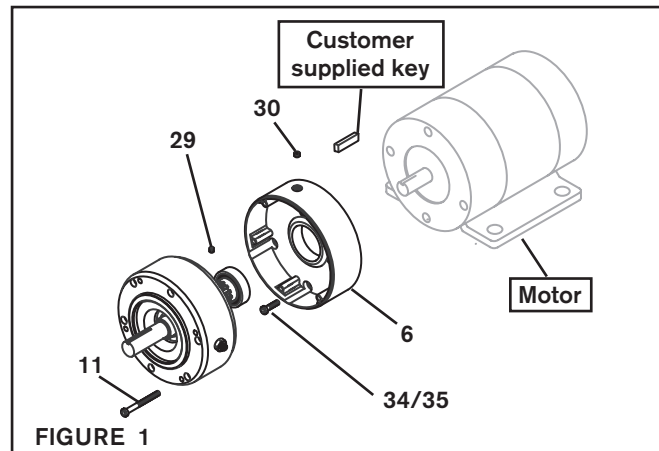


FIGURE 1

RECOMMENDED TORQUE	
MODEL	ITEM 34
625	48.3 Ft. Lbs. [65.5 N•m]
875	48.3 Ft. Lbs. [65.5 N•m]
1125	118.75 Ft. Lbs. [161.0 N•m]
1375	118.75 Ft. Lbs. [161.0 N•m]

TABLE 1

MANUAL RELEASE OPERATION

Refer to Figure 2.

NOTE

The Manual Release Set Screws (Item 26) must be alternately and evenly tightened to insure proper operation of the Manual Release feature.

1. Loosen the Jam Nuts (Item 27) until they are flush with the tops of the two Set Screws (Item 26).

NOTE

Count and record the number of turns required for the Set Screws (Item 26) to disengage the FMBES.

2. Alternately and evenly turn the Set Screws (Item 26) clockwise 1/2 turn at a time until the FMBES is released; then, secure the two Set Screws (Item 26) by turning the Jam Nuts (Item 27) until they are flush with the Housing of the FMBES.
3. To engage the FMBES alternately and evenly turn the Set Screws (Item 26) counterclockwise the same number of turns required to release the FMBES; then, secure the Set Screws with the Jam Nuts (Item 27).

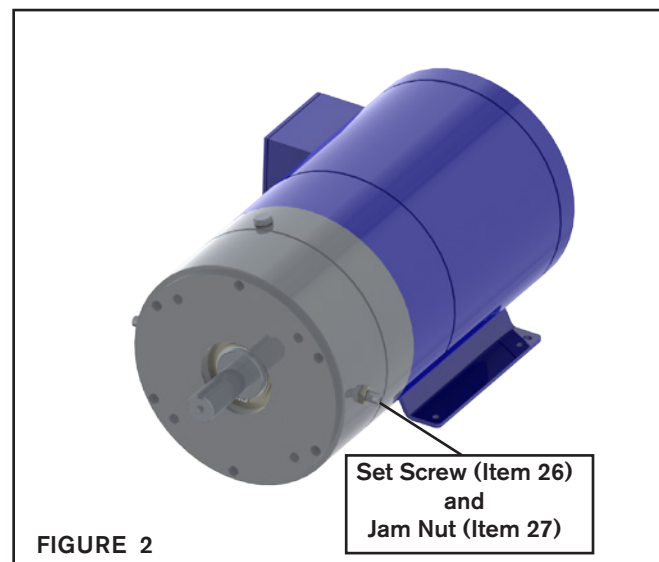


FIGURE 2

LUBRICATION

NOTE

Nexen pneumatically actuated devices require clean, pressure regulated air for maximum performance and life. All seals in Nexen Pneumatically operated devices are lubricated for life and do not require additional lubrication.

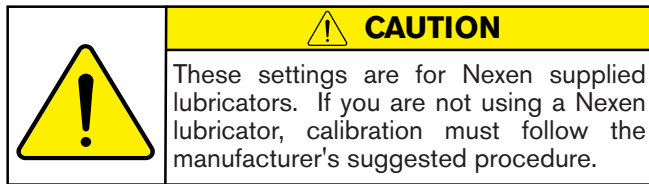
However, some customers prefer to use an air line lubricator, which injects oil into the pressurized air, forcing an oil mist into the air chamber. This is acceptable, but care must be taken to ensure once an air mist lubrication system is used, it is continually used over the life of the product as the oil mist may wash free the factory installed lubrication.

Locate the lubricator above and within ten feet of the product, and use low viscosity oil such as SAE-10.

Synthetic lubricants are not recommended.

Nexen product's bearings are shielded and pre-lubricated, and require no further lubrication.

LUBRICATOR DRIP RATE SETTINGS



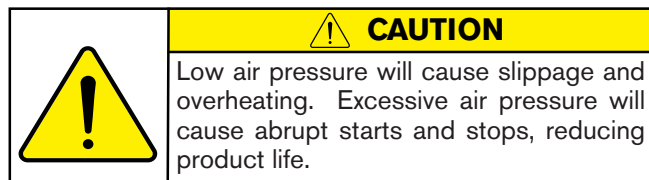
1. Close and disconnect the air line from the unit.
2. Turn the Lubricator Adjustment Knob counterclockwise three complete turns.
3. Open the air line.
4. Close the air line to the unit when a drop of oil forms in the Lubricator Sight Gage.
5. Connect the air line to the unit.
6. Turn the Lubricator Adjustment Knob clockwise until closed.
7. Turn the Lubricator Adjustment Knob counterclockwise one-third turn.
8. Open the air line to the unit.

AIR CONNECTIONS

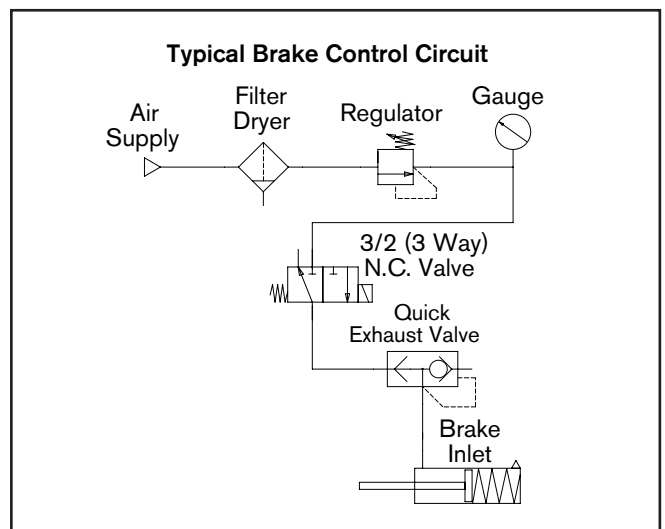
All Nexen pneumatically actuated devices require clean and dry air, which meet or exceeds ISO 8573.1:2001 Class 4.4.3 quality.

NOTE

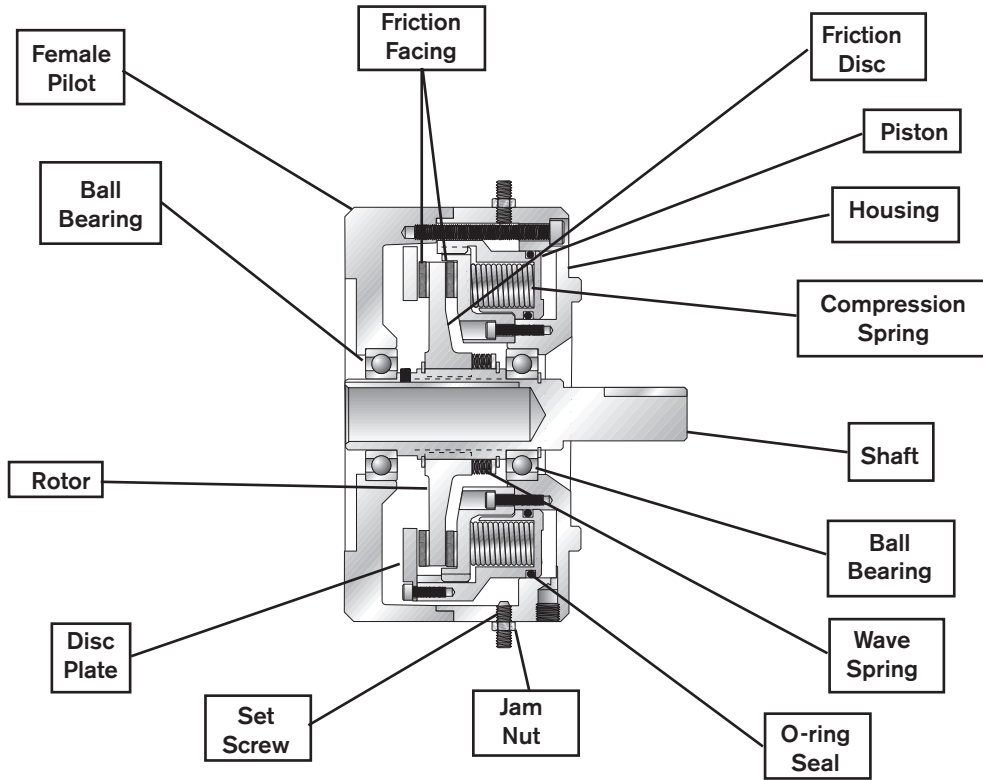
For quick response, Nexen recommends a quick exhaust valve and short air lines between the Control Valves and the product. Align the air inlet ports to a down position to allow condensation to drain out of the air chambers of the product.



The following is a common air supply scheme used with this product. This is an example and not an all-inclusive list. All air circuits to be used with this product must be designed following EN983 guidelines.



TROUBLESHOOTING



TYPICAL FMBES-CC

FIGURE 3

PROBLEM	PROBABLE CAUSE	SOLUTION
Failure to engage.	Broken or weak Compression Springs.	Replace the Compression Springs.
Failure to disengage.	Air not getting to the FMBES due to a control valve malfunction.	Check for a control valve malfunction and replace the control valve if necessary.
	Worn or leaking O-ring Seals.	Replace the O-ring Seals.
	Lack of lubrication on the Hub spline or in the Air Chamber.	Lubricate the Hub spline and/or Air Chamber.
Loss of torque.	Worn or contaminated Friction Facings.	Install new Friction Facings.
	Manual Release engaged.	Disengage Manual Release mechanism.

PARTS REPLACEMENT

Refer to Figures 4 - 7.

NOTE

The following sections are arranged by model. Verify that you are in the correct section for your model.

FRICITION FACING—FMBES-CC

1. Remove the six Socket Head Cap Screws (Item 11).
2. Remove the Pipe Plug (Item 30); then, loosen the Set Screw (Item 29).
3. Separate the two halves of the FMBES-CC.

CAUTION

The Disc Plate (Item 8) is under pressure from the Compression Springs (Item 14). Alternately and evenly remove the Socket Head Cap Screws (Item 10). Always wear safety goggles when working with spring or tension loaded fasteners or devices.

4. Remove the six Socket Head Cap Screws (Item 10); then, remove the Disc Plate (Item 8) from the Piston (Item 5).



CAUTION

Working with spring loaded or tension loaded fasteners and devices can cause injury. Wear safety glasses and take the appropriate safety precautions.

NOTE

The Flat Head Machine Screws (Item 13) are assembled with an anaerobic thread locking compound. Inserting a properly fitting screwdriver into the head of the Flat Head Machine Screw and striking the end of the screwdriver with a hammer will break the crystalline structure of the locking compound and allow removal of the Flat Head Machine Screws. Never use an impact wrench to remove the Flat Head Machine Screws.

5. Remove the six Flat Head Machine Screws (Item 13) and the worn Friction Facing (Item 3) from the Rotor (Item 2).
6. Press the Shaft (Item 1), Ball Bearing (Item 9), and Rotor (Item 2) from the Housing (Item 7).
7. Remove the six Flat Head Machine Screws (Item 13) and the worn Friction Facing (Item 3) from the Friction Disc (Item 4).
8. Install the new Friction Facing (Item 3) to the Friction Disc (Item 4) using the six new Flat Head Machine Screws (Item 13). Tighten the six Flat Head Machine Screws (Item 13) to 20 In. Lbs. [2.2 Nm] torque.
9. Carefully align the O.D. of the Ball Bearing (Item 9) with the bore of the Housing (Item 7); then, press the Shaft (Item 1), Ball Bearing (Item 9), and Rotor (Item 2) back into the Housing (Item 7).
10. Install the new Friction Facing (Item 3) to the Rotor (Item 2) using the six new Flat Head Machine Screws (Item 13); then, alternately and evenly tighten the six Flat Head Machine Screws (Item 13) to 20 In. Lbs. [2.2 Nm] torque.
11. Secure the Disc Plate (Item 8) to the Piston (Item 5) using the six Socket Head Cap Screws (Item 10); then, alternately and evenly tighten the six Socket Head Cap Screws (Item 10) to 40 In. Lbs. [4.5 Nm] torque.
12. Reinstall the FMBES-CC, referring to Steps 3 through 8 of INSTALLATION.

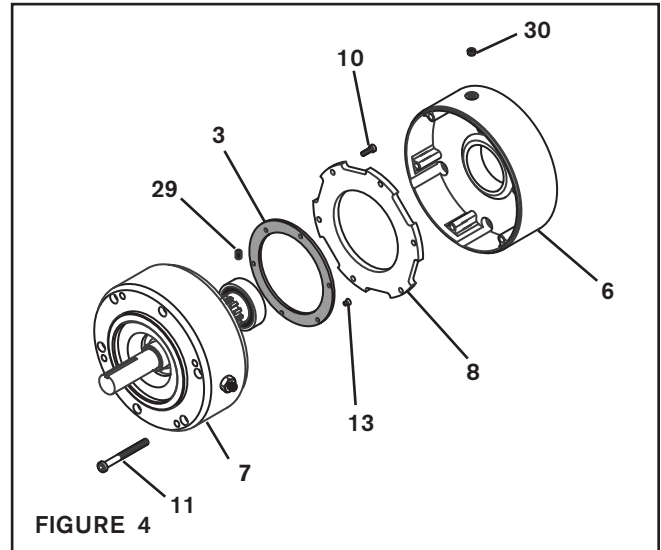


FIGURE 4

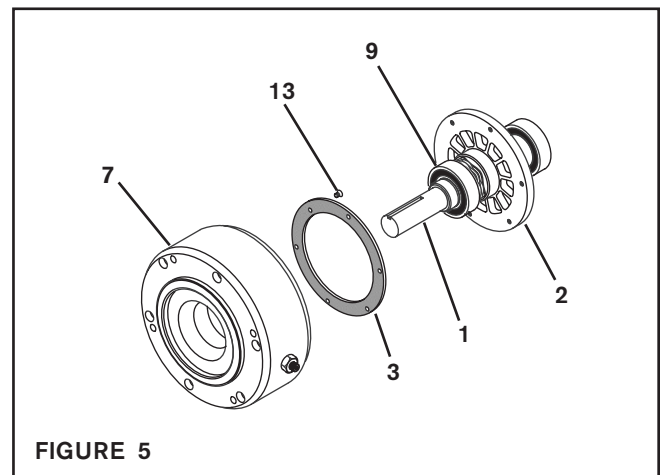


FIGURE 5

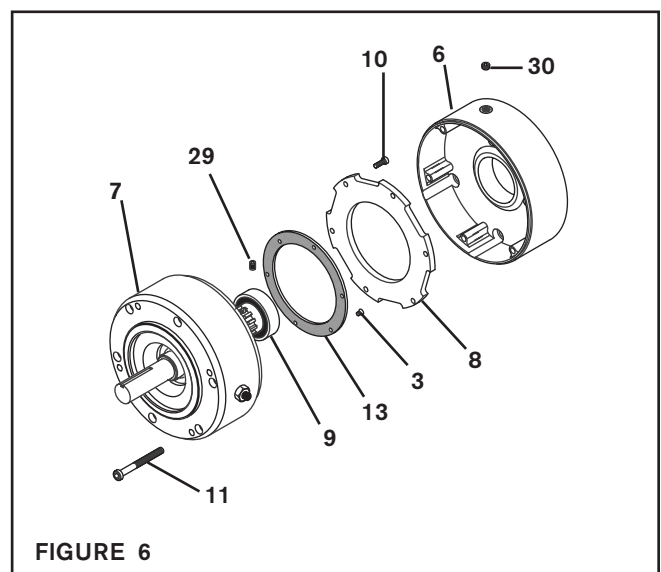


FIGURE 6

PARTS REPLACEMENT *(continued)*

BALL BEARINGS, COMPRESSION SPRINGS, WAVED SPRING, AND O-RING SEALS FMBES-CC

Refer to Figures 7 - 12.

1. Remove the six Socket Head Cap Screws (Item 11).
2. Remove the Pipe Plug (Item 30); then, loosen the Set Screw (Item 29).
3. Separate the two halves of the FMBES-CC.

CAUTION

The Disc Plate (Item 8) is under pressure from the Compression Springs (Item 14). Alternately and evenly remove the Socket Head Cap Screws (Item 10). Always wear safety goggles when working with spring or tension loaded fasteners or devices.

4. Remove the six Socket Head Cap Screws (Item 10); then, remove the Disc Plate (Item 8) from the Piston (Item 5).
5. Press the Shaft (Item 1), Ball Bearing (Item 9), and Rotor (Item 2) from the Housing (Item 7).



CAUTION

Working with spring loaded or tension loaded fasteners and devices can cause injury. Wear safety glasses and take the appropriate safety precautions.

6. Remove the Retaining Ring (Item 16) from the Shaft (Item 1).
7. Press both old Ball Bearings (Item 9) off the Shaft (Item 1).
8. Remove the Retaining Ring (Item 15) from the Shaft (Item 1).
9. Slide the Washer (Item 18) and Waved Spring (Item 17) from the Shaft (Item 1); then, install the new Waved Spring and reinstall the Washer.
10. Reinstall the Retaining Ring (Item 15).
11. Pressing on the inner race of the two new Ball Bearings (Item 9), press the new Ball Bearings (Item 9) onto the Shaft (Item 1).
12. Reinstall the Retaining Ring (Item 16).

WARNING

The Friction Disc (Item 4) is spring loaded. Use 'C' clamps to maintain pressure on the Friction Disc (Item 4) while removing the six Socket Head Cap Screws (Item 12). After the six Socket Head Cap Screws have been removed, slowly release the pressure on the 'C' clamps. Always wear safety goggles when working on spring or tension loaded fasteners or devices.

13. Alternately and evenly remove the six Socket Head Cap Screws (Item 12).

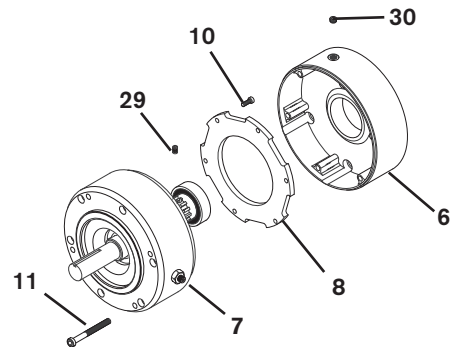


FIGURE 7

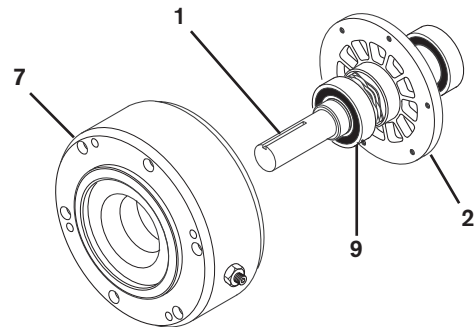


FIGURE 8

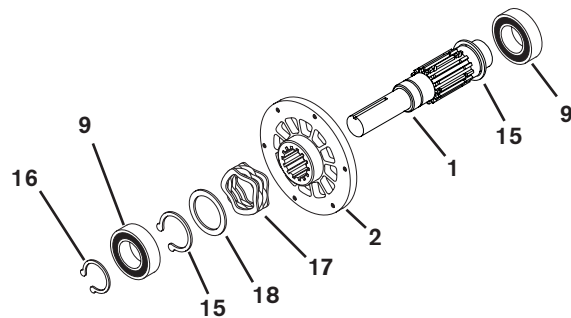


FIGURE 9

PARTS REPLACEMENT *(continued)*

14. Slowly release the pressure on the 'C' clamps; then, remove the 'C' clamps.
15. Remove the Friction Disc (Item 4) and old Compression Springs (Item 14) from the Piston (Item 5).

WARNING

Do not apply excessive air pressure to slide the Piston (Item 5) out of the Housing (Item 7). Excessive air pressure may result in personal injury or damage to the Piston and Housing.

16. Gently apply air pressure to slide the Piston (Item 5) out of the Housing (Item 7).
17. Remove the old O-ring Seals (Items 20 and 21) from the Piston (Item 5).
18. Clean the O-ring grooves of the Piston (Item 5) and O-ring contact surfaces of the Housing (Item 7) with fresh safety solvent.
19. Lubricate the new O-ring Seals (Items 20 and 21) with fresh O-ring lubricant; then, install the new O-ring Seals into the Piston (Item 5).
20. Slide the Piston (Item 5) and new O-ring Seals (Items 20 and 21) into the Housing (Item 7).

NOTE

Repair Kit No. 827301 contains nine Compression Springs (Item 14). Refer to Table 3 for the correct number of Compression Springs required for your Model FMBES-CC and the required output torque.

21. Install the new Compression Springs (Item 14) into the Piston (Item 5).
22. Place the Friction Disc (Item 4) on the Piston (Item 5) and Compression Springs (14); aligning the holes in the Friction Disc with the tapped holes in the Housing.
23. Using 'C' clamps, press the Friction Disc (Item 4) onto the Piston (Item 5).
24. Apply a drop of Loctite® 242 to the threads of the six Socket Head Cap Screws (Item 12).
25. Install the six Socket Head Cap Screws (Item 12); then, alternately and evenly tighten the Socket Head Cap Screws (Item 12) to 30 In. Lbs. [3.4 Nm] torque. Remove the 'C' clamps.
26. Carefully align the O.D. of the Ball Bearing (Item 9) with the bore of the Housing (Item 7); then, press the Shaft (Item 1), Ball Bearing (Item 9), and Rotor (Item 2) back into the Housing (Item 7).

NOTE

Apply Loctite 680® to the outer race of the Ball Bearing (Item 9).

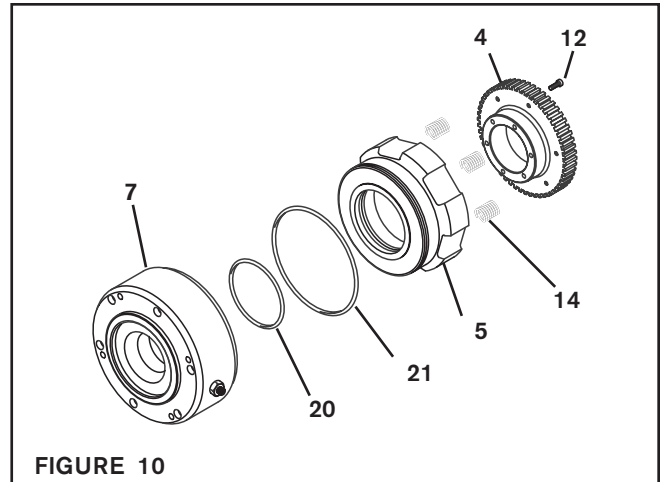


FIGURE 10

MODEL	PRODUCT NO.	OUTPUT TORQUE (In. Lbs.)	REQUIRED NUMBER OF SPRINGS
FMBES-CC 625	827323	100 In. Lbs.	3
FMBES-CC 625	827320	200 In. Lbs.	6
FMBES-CC 875	827343	100 In. Lbs.	3
FMBES-CC 875	827344	200 In. Lbs.	6
FMBES-CC 875	827340	300 In. Lbs.	9
FMBES-CC 1125	827360	400 In. Lbs.	9
FMBES-CC 1375	827380	900 In. Lbs.	15

TABLE 3

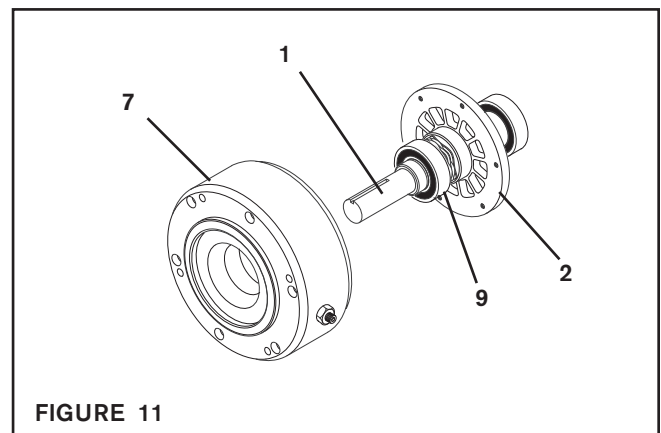
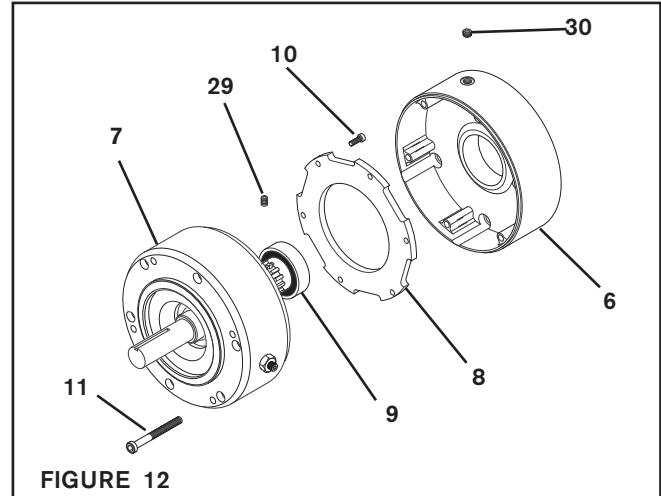


FIGURE 11

PARTS REPLACEMENT *(continued)*

27. Apply a drop of Loctite® 242 to the threads of the six Socket Head Cap Screws (Item 10).
28. Secure the Disc Plate (Item 8) to the Piston (Item 5) using the six Socket Head Cap Screws (Item 10); then, alternately and evenly tighten the six Socket Head Cap Screws (Item 10) to 40 In. Lbs. [4.5 Nm] torque.
29. Reinstall the FMBES-CC, referring to Steps 3 through 8 of INSTALLATION.

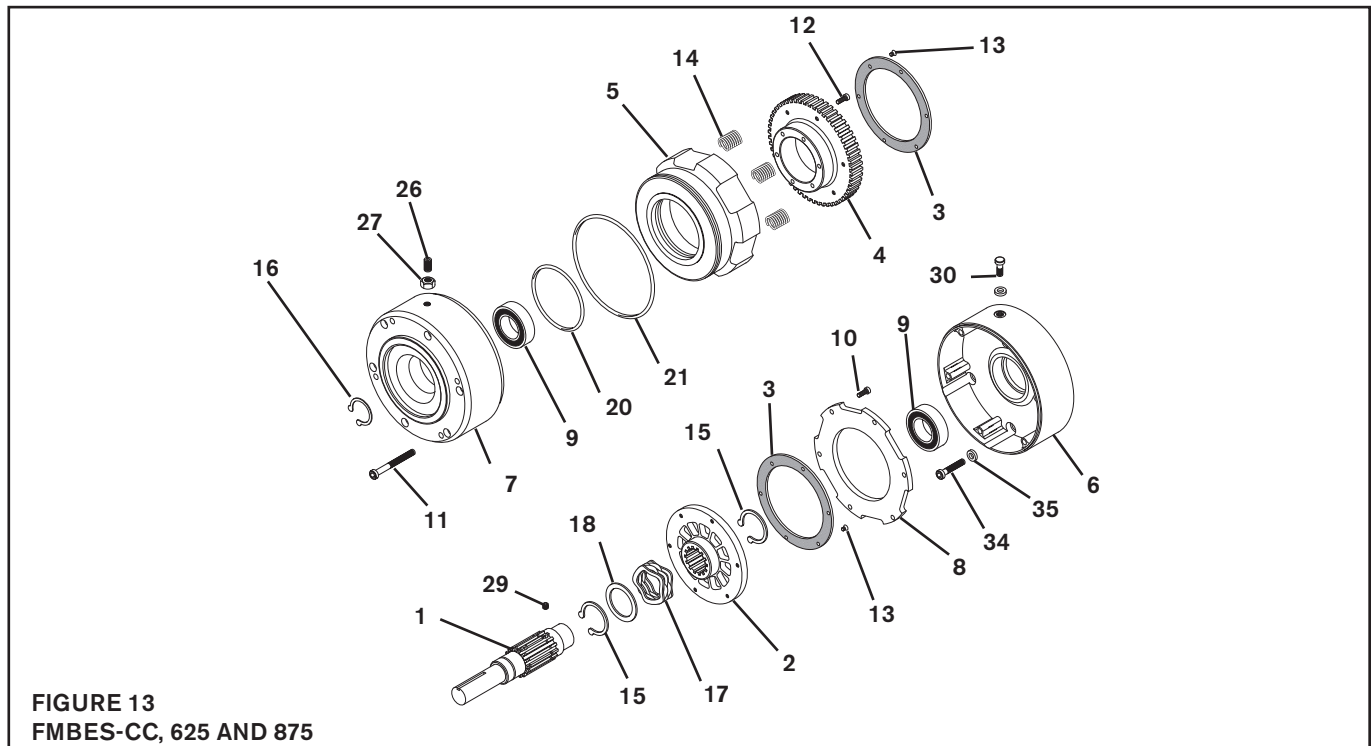


REPLACEMENT PARTS

The Item or “Balloon” Number for all Nexen Products is used for part identification on all Product Parts List, Product Price List, Unit Assembly Drawings, Bills of Materials, and Instruction Manuals.

When ordering replacement parts, specify model designation, item number, part description, and quantity. Purchase replacement parts through your local Nexen Distributor.

REPLACEMENT PARTS (continued)



FMBES-CC, 625

ITEM	DESCRIPTION	QTY
1	Shaft	1
2	Rotor	1
3 ^{1,2}	Friction Facing	2
4	Friction Disc	1
5	Piston	1
6	Female Pilot	1
7	Housing	1
8	Disc Plate	1
9 ²	Ball Bearing	2
10	Socket Head Cap Screw	6
11	Socket Head Cap Screw	6
12	Socket Head Cap Screw	6
13 ^{1,2}	Flat Head Machine Screw	12
14 ²	Compression Spring	3, 6
15	Retaining Ring (Ext.)	2
16	Retaining Ring (Ext.)	1
17 ²	Waved Spring	1
18	Washer	1
20 ²	O-ring Seal	1
21 ²	O-ring Seal	1
24	Key (Not Shown)	1
26	Set Screw	2
27	Jam Nut	2
29	Set Screw	1
30	Pipe Plug	1
34	Socket Head Cap Screw	4
35	Lock Washer	4

¹ Denotes Facing Kit item.
Facing Kit Product No. 827302.

² Denotes Repair Kit item.
Repair Kit Product No. 827301.

FMBES-CC, 875

ITEM	DESCRIPTION	QTY
1	Shaft	1
2	Rotor	1
3 ^{1,2}	Friction Facing	2
4	Friction Disc	1
5	Piston	1
6	Female Pilot	1
7	Housing	1
8	Disc Plate	1
9 ²	Ball Bearing	2
10	Socket Head Cap Screw	6
11	Socket Head Cap Screw	6
12	Socket Head Cap Screw	6
13 ^{1,2}	Flat Head Machine Screw	12
14 ²	Compression Spring	3, 6, 9
15	Retaining Ring (Ext.)	2
16	Retaining Ring (Ext.)	1
17 ²	Waved Spring	1
18	Washer	1
20 ²	O-ring Seal	1
21 ²	O-ring Seal	1
24	Key (Not Shown)	1
26	Set Screw	2
27	Jam Nut	2
29	Set Screw	1
30	Pipe Plug	1
34	Socket Head Cap Screw	4
35	Lock Washer	4

¹ Denotes Facing Kit item.
Facing Kit Product No. 827302.

² Denotes Repair Kit item.
Repair Kit Product No. 827301.

REPLACEMENT PARTS (continued)

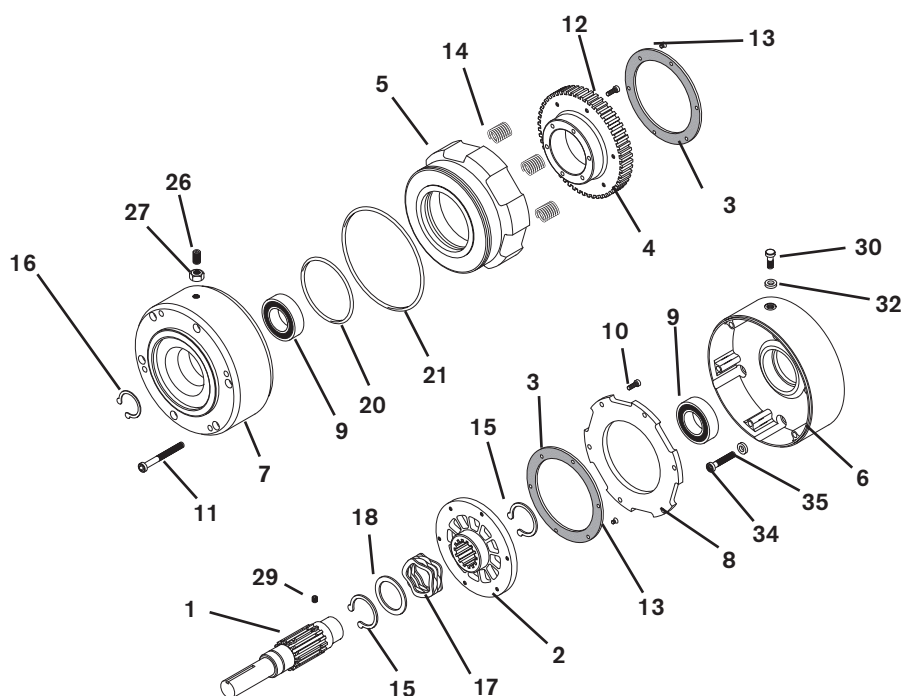


FIGURE 14
FMBES-CC, 1125 AND 1375

FMBES-CC, 1125

ITEM	DESCRIPTION	QTY
1	Shaft	1
2	Rotor	1
3 ^{1,2}	Friction Facing	2
4	Friction Disc	1
5	Piston	1
6	Female Pilot	1
7	Housing	1
8	Disc Plate	1
9 ²	Ball Bearing	2
10	Socket Head Cap Screw	6
11	Socket Head Cap Screw	6
12	Socket Head Cap Screw	6
13 ^{1,2}	Flat Head Machine Screw	12
14 ²	Compression Spring	9
15	Retaining Ring (Ext.)	2
16	Retaining Ring (Ext.)	1
17 ²	Waved Spring	1
18	Washer	1
20 ²	O-ring Seal	1
21 ²	O-ring Seal	1
24	Key (Not Shown)	1
26	Set Screw	2
27	Jam Nut	2
29	Set Screw	1
30	Pipe Plug	1
32	Washer, stato-seal (not shown)	1
34	Socket Head Cap Screw	4
35	Lock Washer	4
36	Socket Head Cap Screw (not shown)	1

¹ Denotes Facing Kit item.
Facing Kit Product No. 827304.

² Denotes Repair Kit item.
Repair Kit Product No. 827303.

FMBES-CC, 1375

ITEM	DESCRIPTION	QTY
1	Shaft	1
2	Rotor	1
3 ^{1,2}	Friction Facing	2
4	Friction Disc	1
5	Piston	1
6	Female Pilot	1
7	Housing	1
8	Disc Plate	1
9 ²	Ball Bearing	2
10	Socket Head Cap Screw	6
11	Socket Head Cap Screw	6
12	Socket Head Cap Screw	6
13 ^{1,2}	Flat Head Machine Screw	12
14 ²	Compression Spring	15
15	Retaining Ring (Ext.)	2
16	Retaining Ring (Ext.)	1
17 ²	Waved Spring	1
18	Washer	1
20 ²	O-ring Seal	1
21 ²	O-ring Seal	1
24	Key (Not Shown)	1
26	Set Screw	2
27	Jam Nut	2
29	Set Screw	1
30	Cap Screw	1
32	Washer	1
34	Socket Head Cap Screw	4
35	Lock Washer	4
36	Socket Head Cap Screw (not shown)	1

¹ Denotes Facing Kit item.
Facing Kit Product No. 827304.

² Denotes Repair Kit item.
Repair Kit Product No. 827303.

WARRANTY

Warranties

Nexen warrants that the Products will (a) be free from any defects in material or workmanship for a period of 12 months from the date of shipment, and (b) will meet and perform in accordance with the specifications in any engineering drawing specifically for the Product that is in Nexen's current product catalogue, or that is accessible at the Nexen website, or that is attached to this Quotation and that specifically refers to this Quotation by its number, subject in all cases to any limitations and exclusions set out in the drawing. NEXEN MAKES NO OTHER WARRANTY, EXPRESS OR IMPLIED, AND ALL IMPLIED WARRANTIES, INCLUDING WITHOUT LIMITATION, IMPLIED WARRANTIES OF MERCHANTABILITY AND FITNESS FOR A PARTICULAR PURPOSE ARE HEREBY DISCLAIMED. This warranty applies only if: (a) the Product has been installed, used and maintained in accordance with any applicable Nexen installation or maintenance manual for the Product; (b) the alleged defect is not attributable to normal wear and tear; (c) the Product has not been altered, misused or used for purposes other than those for which it was intended; and (d) Buyer has given written notice of the alleged defect to Nexen, and delivered the allegedly defective Product to Nexen, within one year of the date of shipment.

Exclusive Remedy

The exclusive remedy for the Buyer for any breach of any warranties provided in connection with this agreement will be, at the election of Nexen: (a) repair or replacement with new, serviceably used, or reconditioned parts or products; or (b) issuance of credit in the amount of the purchase price paid to Nexen by the Buyer for the Products.

Agent's Authority

Buyer agrees that no agent, employee or representative of Nexen has authority to bind Nexen to any affirmation, representation, or warranty concerning the Products other than those warranties expressly set forth herein.

Limitation on Nexen's Liability

TO THE EXTENT PERMITTED BY LAW NEXEN SHALL HAVE NO LIABILITY TO BUYER OR ANY OTHER PERSON FOR INCIDENTAL DAMAGES, SPECIAL DAMAGES, CONSEQUENTIAL DAMAGES OR OTHER DAMAGES OF ANY KIND OR NATURE WHATSOEVER, WHETHER ARISING OUT OF BREACH OF WARRANTY OR OTHER BREACH OF CONTRACT, NEGLIGENCE OR OTHER TORT, OR OTHERWISE, EVEN IF NEXEN SHALL HAVE BEEN ADVISED OF THE POSSIBILITY OR LIKELIHOOD OF SUCH POTENTIAL LOSS OR DAMAGE. For all of the purposes hereof, the term "consequential damages" shall include lost profits, penalties, delay damages, liquidated damages or other damages and liabilities which Buyer shall be obligated to pay or which Buyer may incur based upon, related to or arising out of its contracts with its customers or other third parties. In no event shall Nexen be liable for any amount of damages in excess of amounts paid by Buyer for Products or services as to which a breach of contract has been determined to exist. The parties expressly agree that the price for the Products and the services was determined in consideration of the limitation on damages set forth herein and such limitation has been specifically bargained for and constitutes an agreed allocation of risk which shall survive the determination of any court of competent jurisdiction that any remedy herein fails of its essential purpose.

Inspection

Buyer shall inspect all shipments of Products upon arrival and shall notify Nexen in writing, of any shortages or other failures to conform to these terms and conditions which are reasonably discoverable upon arrival without opening any carton or box in which the Products are contained. Such notice shall be sent within 14 days following arrival. All notifications shall be accompanied by packing slips, inspection reports and other documents necessary to support Buyer's claims. In addition to the foregoing obligations, in the event that Buyer receives Products that Buyer did not order, Buyer shall return the erroneously shipped Products to Nexen within thirty (30) days of the date of the invoice for such Products; Nexen will pay reasonable freight charges for the timely return of the erroneously shipped Products, and issue a credit to Buyer for the returned Products at the price Buyer paid for them, including any shipping expenses that Nexen charged Buyer. All shortages, overages and nonconformities not reported to Nexen as required by this section will be deemed waived.

Limitation on Actions

No action, regardless of form, arising out of any transaction to which these terms and conditions are applicable may be brought by the Buyer more than one year after the cause of action has accrued.

nexen[®]

Nexen Group, Inc.
560 Oak Grove Parkway
Vadnais Heights, MN 55127

800.843.7445
Fax: 651.286.1099
www.nexengroup.com

ISO 9001 Certified