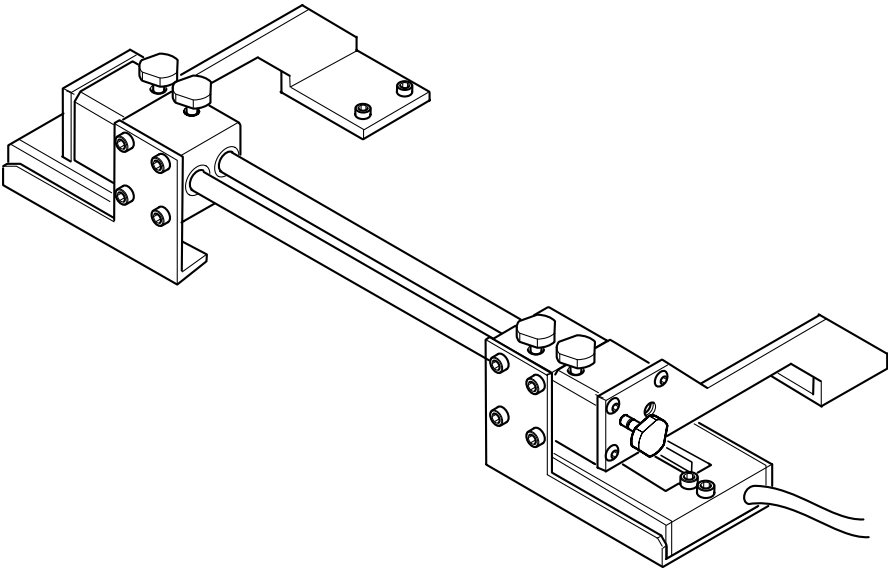


formerly Horton Industrial Products

"Web Controls"

**SMALL WEB GUIDE SENSOR BRACKET ASSEMBLY
INSTALLATION AND ADJUSTMENT INSTRUCTIONS**



Read this manual carefully, making full use of its explanations and instructions. The "Know How" of safe, continuous, trouble-free operation depends on the degree of your understanding of the system and your willingness to keep all components in proper operating condition. Pay particular attention to all **NOTES**, **CAUTIONS**, and **WARNINGS** to avoid the risk of personal injury or property damage. It is important to understand that these **NOTES**, **CAUTIONS**, and **WARNINGS** are not exhaustive. Nexen cannot possibly know or evaluate all conceivable methods in which service may be performed, or the possible hazardous consequences of each method. Accordingly, anyone who uses a procedure that is not recommended by Nexen must first satisfy themselves that neither their safety or the safety of the product will be jeopardized by the service method selected.

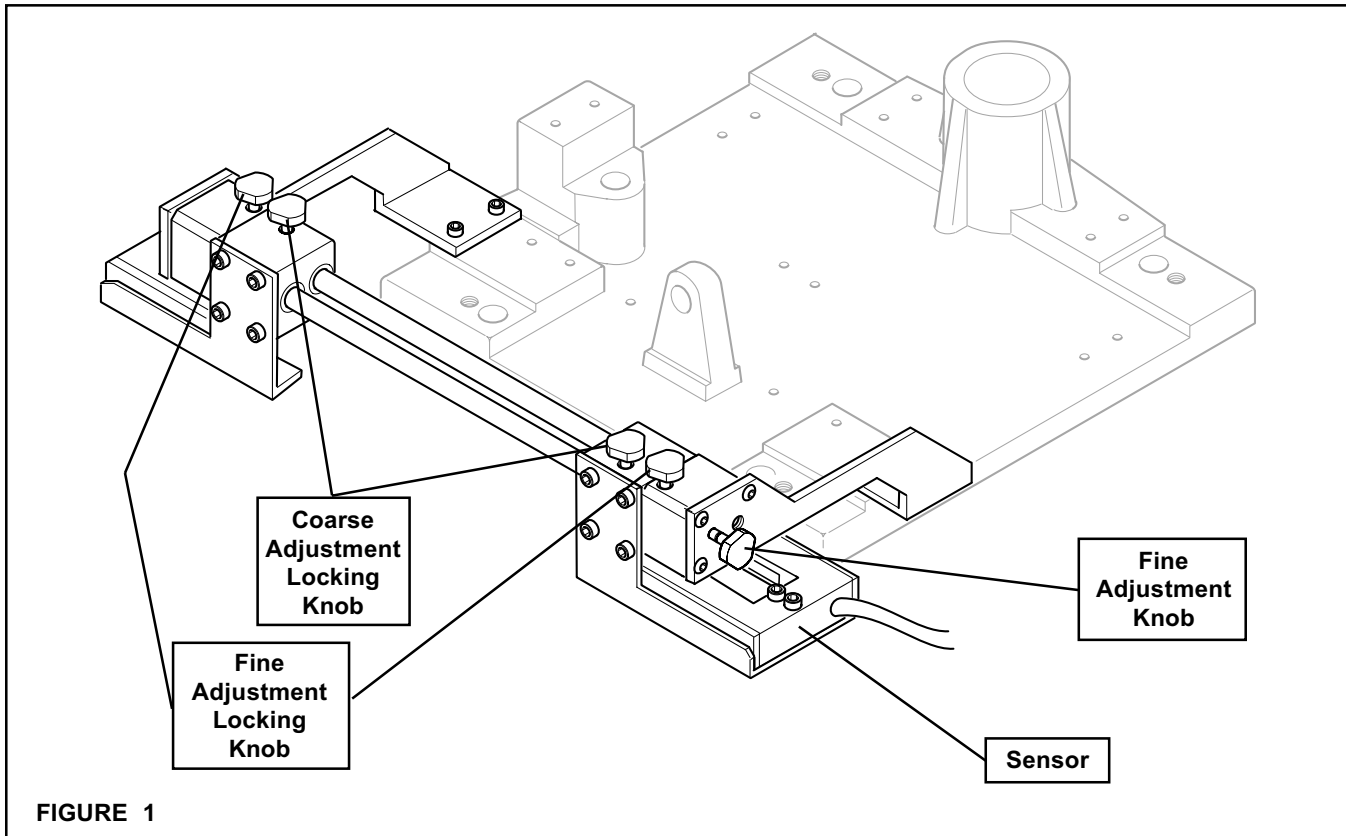
CONTENTS

ADJUSTMENT -----	2
REPLACEMENT PARTS -----	2
PARTS LIST -----	3

ADJUSTMENT

WARNING

The Sensor Bracket Assembly is mounted to the Web Guide by Nexen. If the Sensor Bracket Assembly is ever removed from the Web Guide, make sure the adjustable sliding Sensor Guide Bars do not slide out and fall from the Bar Housing.



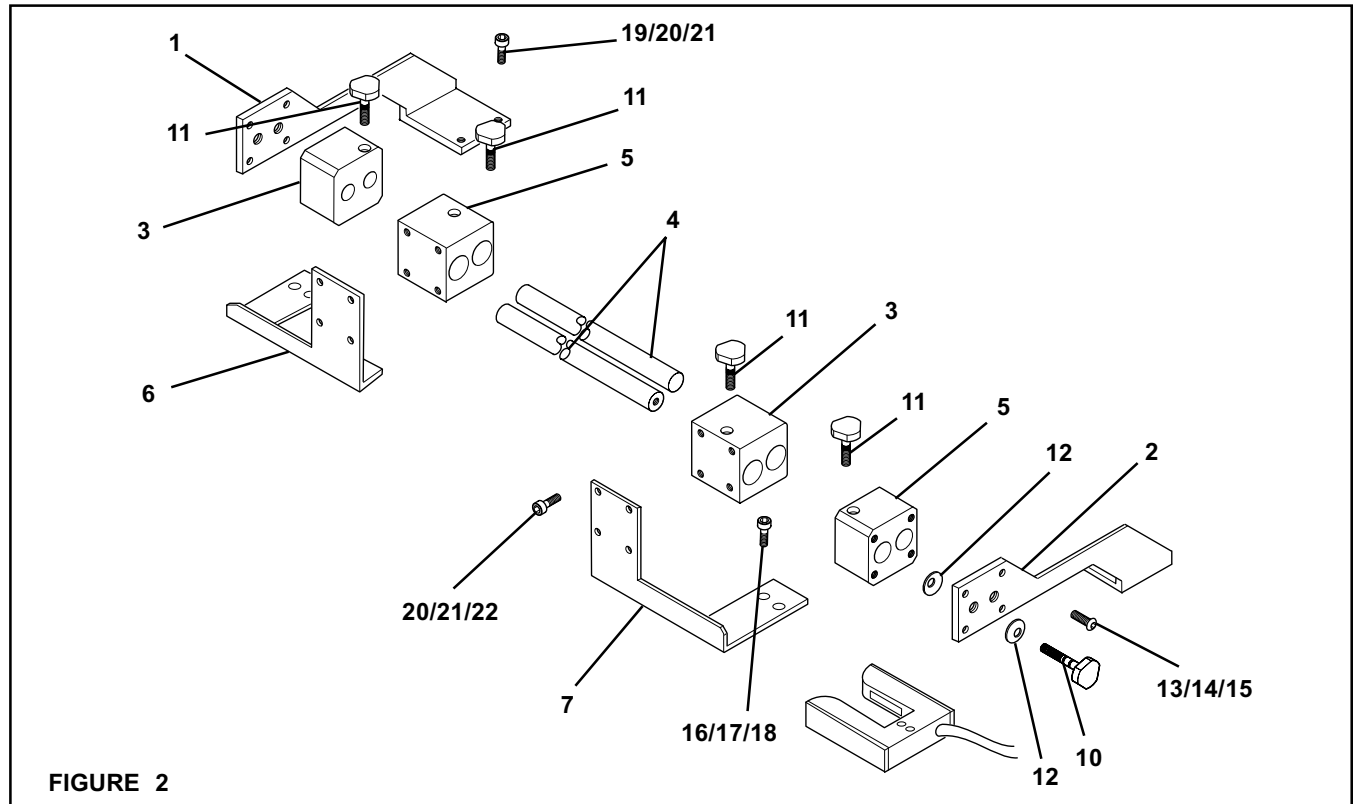
1. Loosen the Fine Adjustment Locking Knob and Coarse Adjustment Locking Knob (See Figure 1).
2. Slide the Sensor as close as possible to the web edge (See Figure 1).
3. Tighten the Coarse Adjustment Locking Knob (See Figure 1).
4. Use the Fine Adjustment Knob to locate the Sensor in its exact required position (the fine adjustment range is approximately 0.5 In. [12.7 mm] in each direction) (See Figure 1).
5. Tighten the Fine Adjustment Locking Knob (See Figure 1).
6. Repeat Steps 1 through 5 if two Sensors are used.

REPLACEMENT PARTS

The item or balloon number for all Nexen products is used for part identification on all product parts lists, product price lists, unit assembly drawings, bills of materials, and instruction manuals.

When ordering replacement parts, specify model designation, item number, part description, and quantity. Purchase replacement parts through your local Nexen Distributor.

PARTS LIST



ITEM	DESCRIPTION	QUANTITY								
		MODEL 964180	MODEL 964181	MODEL 964182	MODEL 964185	MODEL 964186	MODEL 964187	MODEL 964190	MODEL 964191	MODEL 964192
1	Right Support Guide Bar	1	1	1	1	1	1	1	1	1
2	Left Support Guide Bar	1	1	1	1	1	1	1	1	1
3	Housing Bar	2	2	2	2	2	2	2	2	2
4	Sensor Guide Bar	2	2	2	2	2	2	2	2	2
5	Sensor Guide Block	2	1	1	2	1	1	2	1	1
6	Right Mounting Bracket	1	--	1	1	--	1	1	--	1
7	Left Mounting Bracket	1	1	--	1	1	--	1	1	--
9	Nylon Cable (Not Shown)	2	2	2	2	2	2	2	2	2
10	Adjustment Knob Assembly	2	2	2	2	2	2	2	2	2
11	Locking Knob Assembly	4	3	3	4	3	3	4	3	3
12	Bowed External Retaining Ring	4	4	4	4	4	4	4	4	4
13	Flat Washer	10	10	10	10	10	10	10	10	10
14	Lock Washer	10	10	10	10	10	10	10	10	10
15	Pan Head Screw	10	10	10	10	10	10	10	10	10
16	Socket Head Cap Screw	4	2	2	4	2	2	4	2	2
17	Flat Washer	4	2	2	4	2	2	4	2	2
18	Lock Washer	4	2	2	4	2	2	4	2	2
19	Socket Head Cap Screw	4	4	4	4	4	4	4	4	4
20	Flat Washer	12	8	8	12	8	8	12	8	8
21	Lock Washer	12	8	8	12	8	8	12	8	8
22	Socket Head Cap Screw	8	4	4	8	4	4	8	4	4

WARRANTY

Nexen Group, Inc. (Nexen) warrants its product(s) [the Product(s)] will be free from defects in materials and workmanship under normal use and service conditions for a period of 12 months from the date of shipment. NO OTHER WARRANTIES, WHETHER EXPRESS, IMPLIED, OR STATUTORY, INCLUDING WITHOUT LIMITATION WARRANTIES OF MERCHANTABILITY, OR OF FITNESS FOR A PARTICULAR PURPOSE, ARE GIVEN, AND ALL SUCH OTHER WARRANTIES ARE HEREBY EXPRESSLY DISCLAIMED.

Conditions

This warranty applies only if: (a) the Product has been installed, used, and maintained in accordance with any applicable Nexen installation or maintenance manual for the Product; (b) the alleged defect is not attributable to normal wear and tear; (c) the Product has not been altered, misused, or used for purposes other than those for which it was intended; and (d) the claimant has complied with the warranty claim procedures set out below in Warranty Claim Procedures.

Exclusive Remedy

The sole and exclusive remedy for a breach of this warrant shall be, at Nexen's sole election, repair or replacement with new, serviceably used or reconditioned Product, or issuance of a credit in the amount of the current Nexen discounted price for the Product.

Limitation of Damages

In no event shall Nexen be liable for any consequential, indirect, incidental, or special damages of any nature whatsoever, including without limitation, lost profits arising from the sale or use of the Products.

Warranty Claim Procedures

To make a claim under this warranty, the claimant must give written notice of the alleged defect to Nexen and deliver the Product to Nexen within one year of the date on which the alleged defect first became apparent.

**Nexen Group, Inc.
560 Oak Grove Parkway
Vadnais Heights, MN 55127
800-843-7445
In MN: (651) 484-5900
Fax: (651) 286-1099
www.nexengroup.com**

ISO 9001 Certified