



Small Web Guide With Dust Proof Cover

In accordance with Nexen's established policy of constant product improvement, the specifications contained in this manual are subject to change without notice. Technical data listed in this manual are based on the latest information available at the time of printing and are also subject to change without notice.

Technical Support:
800-843-7445
(651) 484-5900

www.nexengroup.com



WARNING

Read this manual carefully before installation and operation.

Follow Nexen's instructions and integrate this unit into your system with care.

This unit should be installed, operated and maintained by qualified personnel **ONLY**.

Improper installation can damage your system or cause injury or death.

Comply with all applicable codes.

Nexen Group, Inc.
560 Oak Grove Parkway
Vadnais Heights, Minnesota 55127

TABLE OF CONTENTS

Introduction	1
Installation	2
Electrical Connections	2
Limit Switch and Centering Switch Adjustment	3
Replacement Parts	4
Parts List	5
Warranties	6

INTRODUCTION

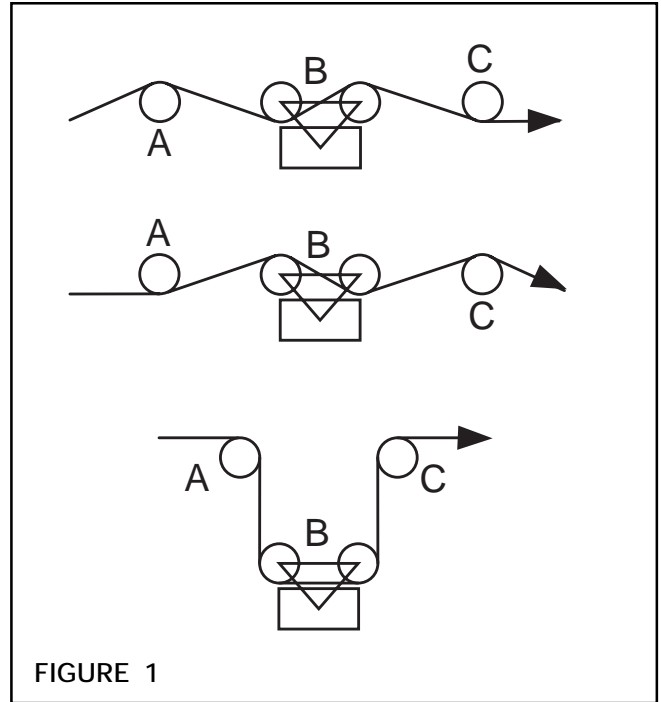
Read this manual carefully, making full use of its explanations and instructions. The “Know How” of safe, continuous, trouble-free operation depends on the degree of your understanding of the system and your willingness to keep all components in proper operating condition. Pay particular attention to all NOTES, CAUTIONS, and WARNINGS to avoid the risk of personal injury or property damage. It is important to understand that these NOTES, CAUTIONS, and WARNINGS are not exhaustive. Nexen cannot possibly know or evaluate all conceivable methods in which service may be performed, or the possible hazardous consequences of each method. Accordingly, anyone who uses a procedure that is not recommended by Nexen must first satisfy themselves that neither their safety or the safety of the product will be jeopardized by the service method selected.

INSTALLATION

1. Position the Web Guide as close as possible to the critical area to which the web is being guided. Any rolls between the lead out roll **C** and the critical area will detract from guiding accuracy (See Figure 1).
2. Find the web path to be used (See Figure 1).
 - a. Lead in roll **A** and lead out roll **C** are customer provided.
 - b. The web must travel through the Web Guide in the direction of the arrow on the side of the Web Guide.
 - c. Web lead in distance (**A** to **B**) and lead out distance **B** to **C**) must be at least $1\frac{1}{2}$ times the web width.

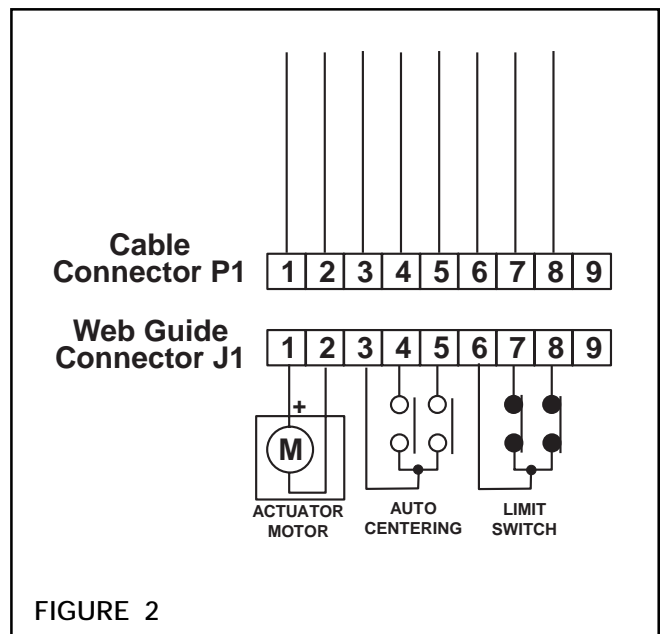
NOTE: $1\frac{3}{4}$ times the web width is the recommended distance between web lead in and lead out.

 - d. Ensure that the Web Guide rolls **B** are parallel to the lead in roll **A** and the lead out roll **C** when the Web Guide is in its mid-travel or centered position.
3. Mount the Web Guide to the machine.



ELECTRICAL CONNECTIONS

Connector **P1** is provided with the cable purchased from Nexen. **P1** mates with connector **J1** mounted on the Web Guide. Refer to Cable Installation Guide L-20256 for proper connections.



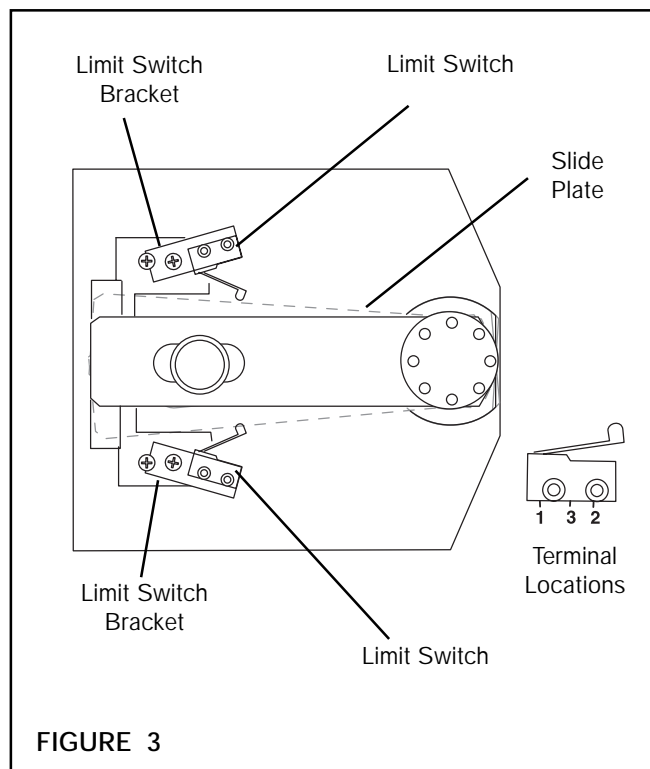
LIMIT SWITCH AND CENTERING SWITCH ADJUSTMENT

LIMIT SWITCH ADJUSTMENT

CAUTION

Limit Switches must be adjusted to interrupt movement before contact is made with a physical obstruction or stop. Failure to do so will damage the Controller or surrounding equipment. If there are no obstructions, the Limit Switches may be left in their factory set positions for maximum travel.

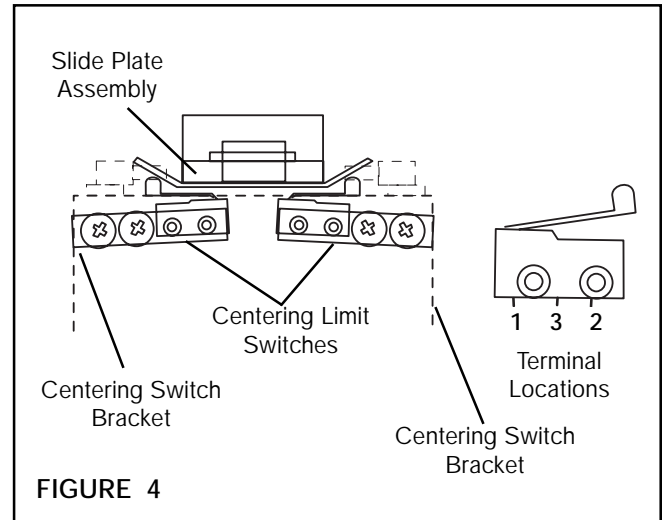
1. Loosen the Limit Switch Brackets and slide them to their fully outward position (See Figure 3).
2. Turn the Controller **ON** and set it to manual control mode.
3. Using the Controller switches to actuate the motor, move the Slide Plate in one direction until the desired end of travel is reached (See Figure 3).
4. Connect a voltmeter across Terminals 1 and 2 of one Limit Switch (See Figure 3).
5. Slide the respective Limit Switch Bracket towards the Slide Plate until the Limit Switch makes contact with the Slide Plate and the voltmeter reads \pm (plus or minus) 5 volts.
6. Tighten the Pan Head Screws holding the Limit Switch Bracket (See Figure 3).
7. Repeat Steps 3 through 6 for the second Limit Switch (See Figure 3).
8. Turn the Controller **OFF**.



CENTERING LIMIT SWITCH ADJUSTMENT

NOTE: The Centering Limit Switches have been set at the factory. The Centering Limit Switch adjustment should be performed only if the Centering Limit Switch settings have been changed to settings other than the factory settings.

1. Turn the Controller **ON** and set it to manual control mode.
2. Using the Controller switches to actuate the motor, move the Slide Plate in either direction until it is centered on the base (See Figure 4).
3. Turn the Controller **OFF** and disconnect Web Guide from the Controller.
4. Connect an ohmmeter across Terminals 1 and 3 of one Centering Limit Switch (See Figure 4).
5. Loosen one Centering Switch Bracket, and slide the Limit Switch and Centering Switch Bracket towards the middle of the unit until the ohmmeter reads 0 ohms.
6. Slowly slide the Centering Switch Bracket in small increments in the opposite direction until the ohmmeter reads infinity (∞) or a high ohm reading.
7. Tighten the Pan Head Screws holding the Centering Switch Bracket (See Figure 4).
8. Repeat Steps 3 through 6 for the other Centering Limit Switch.
9. Using an ohmmeter, recheck Terminals 1 and 3 of each Centering Limit Switch for a reading of infinity (∞) or a high ohm reading.
10. Connect the Web Guide to the Controller.



REPLACEMENT PARTS

The item or balloon number for all Nexen products is used for part identification on all product parts lists, product price lists, unit assembly drawings, bills of materials, and instruction manuals.

When ordering replacement parts, specify model designation, item number, part description, and quantity. Purchase replacement parts through your local Nexen Distributor.

PARTS LIST

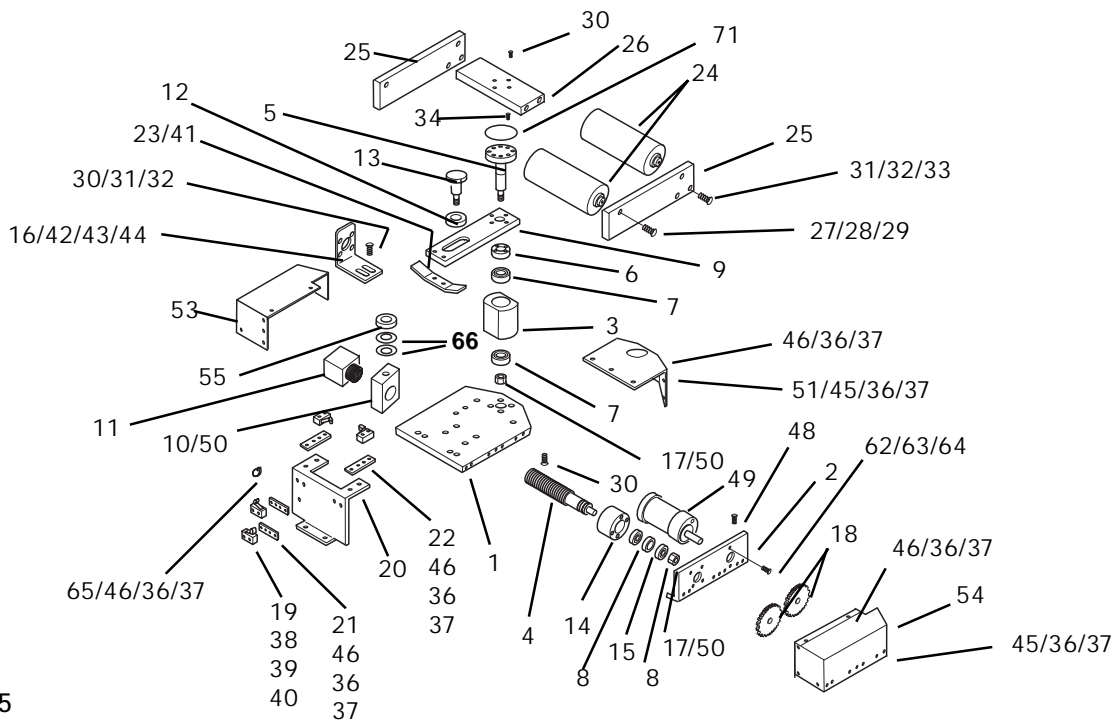


FIGURE 5

ITEM	DESCRIPTION	QTY
1	Base Plate	1
2	Side Plate	1
3	Pivot Base	1
4	Ball Screw	1
5	Pivot Screw	1
6	Pivot Spacer	1
7	Pivot Bearing	2
8	Motion Bearing	2
9	Slide Plate	1
10	Slide Mount	1
11	Ball Nut	1
12	Sleeve Screw	1
13	Motion Screw	1
14	Motion Housing	1
15	Bearing Spacer	1
16	Terminal Bracket	1
17	Pivot Shaft Nut	2
18	Spur Gear	2
19	Limit Switch	4
20	Sensor Mount	1
21	Centering Switch Bracket	2
22	Limit Switch Bracket	2
23	Centering Bracket	1
24	Idler Roll	2
25	Side Plate (Roller)	2
26	Roller Plate	1
27	Socket Head Cap Screw	4
28	Lock Washer (Not Shown)	4
29	Flat Washer (Not Shown)	4
30	Socket Head Cap Screw	10
31	Lock Washer (Not Shown)	6
32	Flat Washer (Not Shown)	6
33	Socket Head Cap Screw	4

ITEM	DESCRIPTION	QTY
34	Socket Head Cap Screw	4
36	Lock Washer (Not Shown)	35
37	Flat Washer (Not Shown)	35
38	Pan Head Screw	8
39	Flat Washer (Not Shown)	8
40	Lock Washer (Not Shown)	8
41	Flat Screw	2
42	Pan Head Screw	6
43	Lock Washer (Not Shown)	6
44	Flat Washer (Not Shown)	6
45	Pan Head Screw (Not Shown)	14
46	Pan Head Screw (Not Shown)	19
47	Socket Head Cap Screw	2
48	Socket Head Cap Screw	3
49	Motor Gearbox	1
50	Set Screw (Not Shown)	3
51	End Plate	1
53	Cover (Left)	1
54	Cover (Right)	1
55	Spacer	1
56	Receptacle (Not Shown)	1
57	Plug (Not Shown)	1
58	Contact Pin (Not Shown)	8
59	Contact Socket (Not Shown)	8
60	Cable (Not Shown)	1
61	Socket Head Cap Screw (Not Shown)	4
62	Socket Head Cap Screw	2
63	Lock Washer (Not Shown)	2
64	Flat Washer (Not Shown)	2
65	Cable Clamp	2
66	Belleville Washer	2
71	O-ring Seal	1
72	Tape (Not Shown)	

WARRANTIES

Warranties

Nexen warrants that the Products will be free from any defects in material or workmanship for a period of 12 months from the date of shipment. NEXEN MAKES NO OTHER WARRANTY, EXPRESS OR IMPLIED, AND ALL IMPLIED WARRANTIES, INCLUDING WITHOUT LIMITATION, IMPLIED WARRANTIES OF MERCHANTABILITY AND FITNESS FOR A PARTICULAR PURPOSE ARE HEREBY DISCLAIMED. This warranty applies only if (a) the Product has been installed, used and maintained in accordance with any applicable Nexen installation or maintenance manual for the Product; (b) the alleged defect is not attributable to normal wear and tear; (c) the Product has not been altered, misused or used for purposes other than those for which it was intended; and (d) Buyer has given written notice of the alleged defect to Nexen, and delivered the allegedly defective Product to Nexen, within one year of the date of shipment.

Exclusive Remedy

The exclusive remedy of the Buyer for any breach of the warranties set out above will be, at the sole discretion of Nexen, a repair or replacement with new, serviceably used or reconditioned Product, or issuance of credit in the amount of the purchase price paid to Nexen by the Buyer for the Products.

Limitation of Nexen's Liability

TO THE EXTENT PERMITTED BY LAW NEXEN SHALL HAVE NO LIABILITY TO BUYER OR ANY OTHER PERSON FOR INCIDENTAL DAMAGES, SPECIAL DAMAGES, CONSEQUENTIAL DAMAGES OR OTHER DAMAGES OF ANY KIND OR NATURE WHATSOEVER, WHETHER ARISING OUT OF BREACH OF WARRANTY OR OTHER BREACH OF CONTRACT, NEGLIGENCE OR OTHER TORT, OR OTHERWISE, EVEN IF NEXEN SHALL HAVE BEEN ADVISED OF THE POSSIBILITY OR LIKELIHOOD OF SUCH POTENTIAL LOSS OR DAMAGE. For all of the purposes hereof, the term "consequential damages" shall include lost profits, penalties, delay damages, liquidated damages or other damages and liabilities which Buyer shall be obligated to pay or which Buyer may incur based upon, related to or arising out of its contracts with its customers or other third parties. In no event shall Nexen be liable for any amount of damages in excess of amounts paid by Buyer for Products or services as to which a breach of contract has been determined to exist. The parties expressly agree that the price for the Products and the services was determined in consideration of the limitation on damages set forth herein and such limitation has been specifically bargained for and constitutes an agreed allocation of risk which shall survive the determination of any court of competent jurisdiction that any remedy herein fails of its essential purpose.

Limitation of Damages

In no event shall Nexen be liable for any consequential, indirect, incidental, or special damages of any nature whatsoever, including without limitation, lost profits arising from the sale or use of the Products.

Warranty Claim Procedures

To make a claim under this warranty, the claimant must give written notice of the alleged defect to whom the Product was purchased from and deliver the Product to same within one year of the date on which the alleged defect first became apparent.

nexen®

Nexen Group, Inc.
560 Oak Grove Parkway
Vadnais Heights, MN 55127

800.843.7445
Fax: 651.286.1099
www.nexengroup.com

ISO 9001 Certified